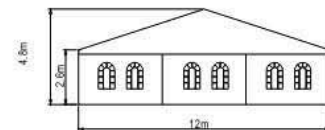
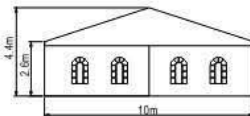
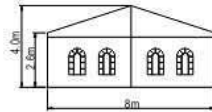
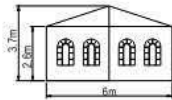
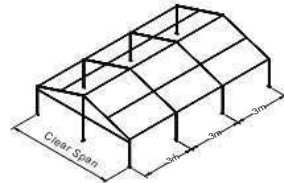




## Wedding tent Technical Data 婚礼篷房技术参数



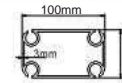
Item 名称	Specification 规格
Clear-span width 篷房跨度	6m/8m/10m/12m
Eave height 屋檐高度	2.6m
Ridge height 屋脊高度	3.7m/4.0m/4.4m/4.8m
Roof pitch 屋面坡度	20°
Bay distance 单元间距	3m
Longest component 最长部件	3.7m/4.2/6.4m
Minimum tent length 最少起订	6m
Roof fixing 屋面固定	Bar tensioning 拉紧器
Main profile 主型材	100x48x3mm
Max. allowed wind speed 最高承受抗风	80km/hour 0.3kn/m <sup>2</sup>
Eave/Ridge connection 屋檐/屋脊连接角	Hot-dip Galvanized steel insert 镀锌钢铁
Framework material 框架材料	Hard pressed extruded Aluminium 6061-T6 硬挤压铝合金 6061-T6 (13HW)
Cover material 屋面材料	Waterproof, fireproof (DIN4012 B1, M2), UVresistant 防腐、防霉、抗紫外线、阻燃 (M2和B1) 等性能达到国际标准



## Framework main profile dimension and use 框架主型材尺寸及使用

### Optional accessories

PVC window sidewalls	PVC侧边围布
Glass door units	玻璃门
Anchoring	膨胀螺丝
Transparent PVC cover and sidewall	透明PVC墙和墙壁
Rain Gutter	雨水槽
Flooring system	地台
Lining and curtain	窗帘和围幔
Weight plate	称重盘
Hard walling system	硬墙体系统
Glass walling system	玻璃墙系统



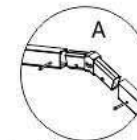
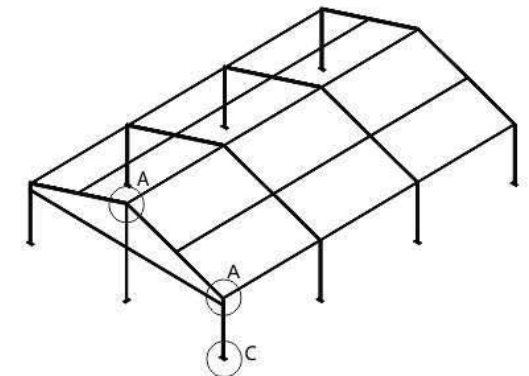
Roof Beam, Upright Support, Gable Pole  
顶梁、立柱、端面柱子



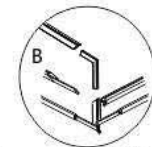
Eave Purlin, Gable pole, Ridge Purlin  
Intermediate Purlin  
屋檐梁、端面横梁、屋脊梁  
屋面方管



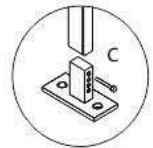
Sidewall downside bar  
墙底压杆



ridge head connection (gable end)  
顶角链接



eave corner (field)  
屋檐链接



baseplate (field)  
底座链接

